



## Spacious family home

# Albyn Road, Deptford, SE8 £765,000

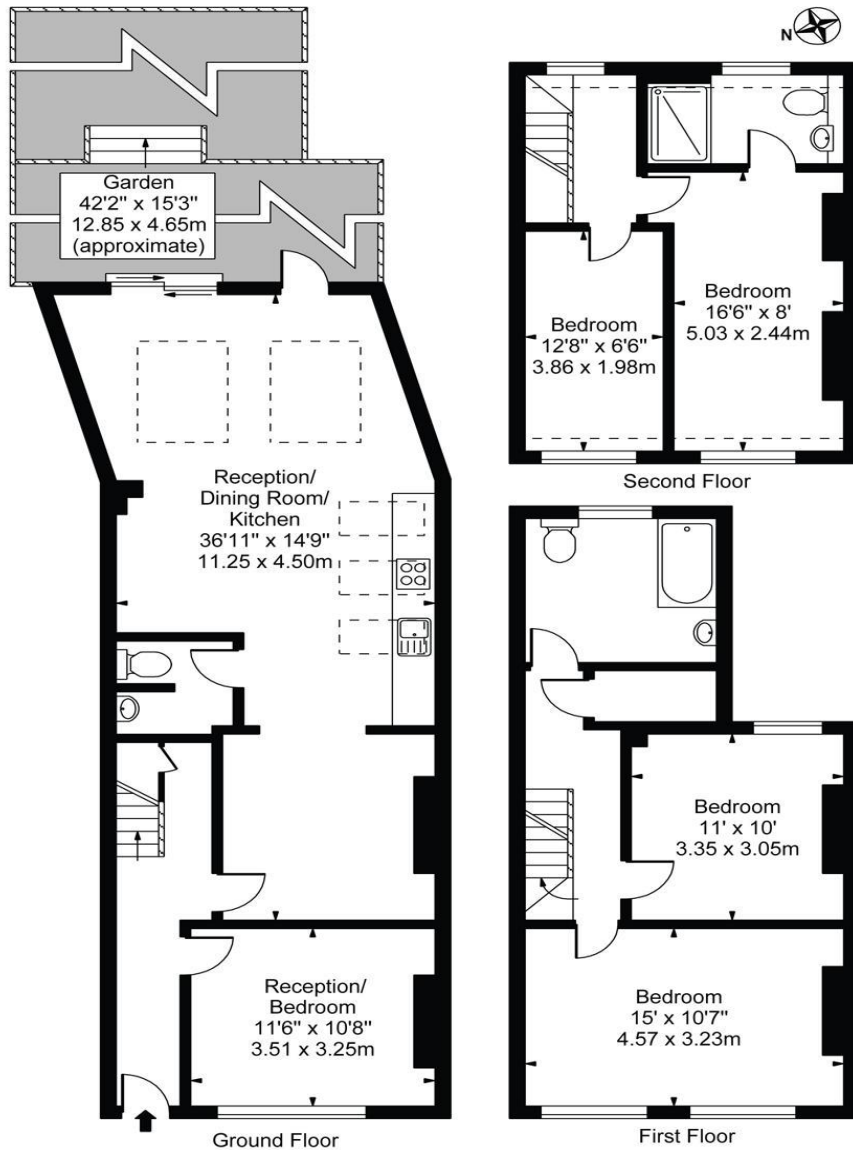
A beautifully refurbished period house, conveniently located on a desirable road just moments from New Cross and Deptford Bridge. The house has been subject to extensive renovation and the current owner has paid great attention to detail to create a bright and spacious home with a high specification finish. The property features a large eat-in kitchen and dining area, separate reception room to the front, four double bedrooms spread over the top two floors, two bathrooms, a downstairs cloakroom and a private south-west facing garden. What the vendor says: "On the quiet residential road and also cycle route number 20, the property in Albyn Road is next to the Deloraine Allotments. Albyn Road featured in best streets of Deptford in Evening Standard July 2015. It blends the 1850's Victorian character with a modern open layout required for today's living requirements".

## Features

- End of terrace house
- Four bedrooms
- Two bathrooms
- Exquisite finish
- South-west facing garden
- Chain free

## Albyn Road, SE8

Approx. Gross Internal Area 1500 Sq Ft - 139.35 Sq M



This floor plan should be used as a general outline for guidance only and does not constitute in whole or in part an offer or contract. Any intending purchaser or lessee should satisfy themselves by inspection, searches, enquiries and full survey as to the correctness of each statement. Any areas, measurements or distances quoted are approximate and should not be used to value a property or be the basis of any sale or let.

## Albyn Road, Deptford, SE8